



TOUGH TRAC™

CONTINUOUS ARRAY PORTRAIT LARGE APRIL 2012

Sample Installation



Photo: Courtesy of www.third-sun.com

TOUGH TRAC™

The TOUGH TRAC solution for continuous arrays, our Continuous Arrays Large is designed for long spans with minimum ground penetrations and compatible to use with concrete piers & ground screws.

For applications requiring a long and continuous array, our Continuous Array Large is designed to mount 4 rows in landscape or 3 rows in portrait on a 20 degree tilt. To minimize ground penetrations, only 2 footings, front to back are needed for each section. Our 100% Aluminum Power Arm is built with a rail slot which combined with our Standard or Heavy Duty Rails can provide ultimate adjustability to mount any size panel. Simple to install and with superior aesthetics, our Continuous Array Large is the solution for your next solar farm or any ground installation you will need. Consult your installer, architect, or engineer to determine your footing sizing and adequate spacing for shadowing between rows.



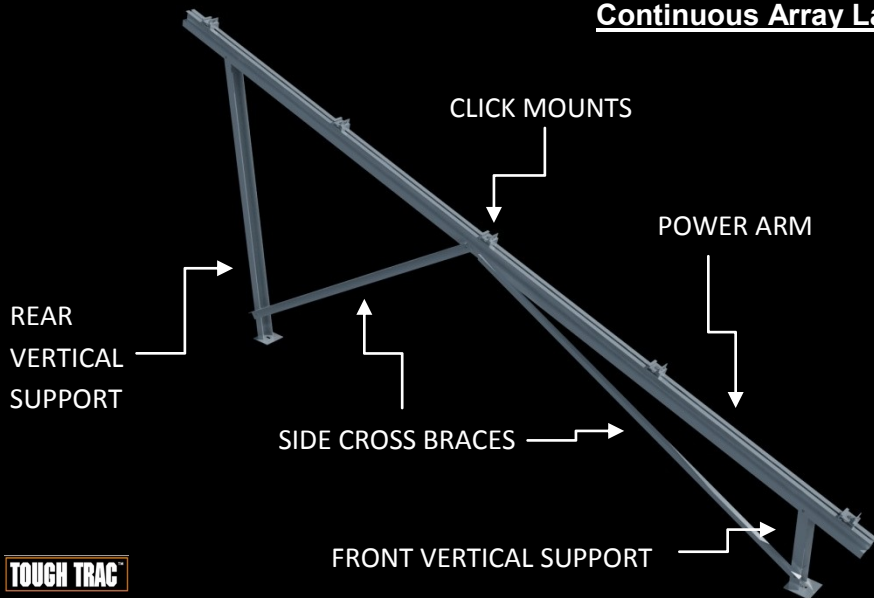
FACTORY PRODUCTION FACILITIES: Made in the USA & China

VISIT US ONLINE AT WWW.TOUGHTRAC.COM

©COPYRIGHT 2009 TOUGH TRAC™. TRADEMARK BELONGS TO THEIR RESPECTIVE OWNERS. ALL RIGHTS RESERVED.



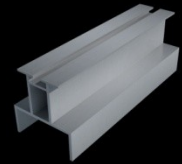
Continuous Array Large Section



TOUGH TRAC™

TOUGH TRAC™

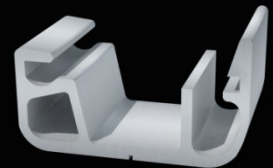
Continuous Array Parts



POWER ARM



VERTICAL SUPPORT WITH
WELDED BASE PLATE



CLICK MOUNT



CROSS BRACES



TOP MOUNT MID CLAMP



Photo: Courtesy of www.third-sun.com

TOUGH TRAC™

Continuous Array Large Section includes the following parts:

- (1) Power Arm
- (1) Front & Rear Vertical Support with Welded Base Plate
- (6) Click Mounts, Small Square Rail Bolts, Set Screws #14 x 1.5"
- (3) Cross Braces
- (2) 5/16" x 4" Stainless Steel Bolts/Washers/Nuts
- (6) 1/4" x 1" Stainless Steel Bolts/Washers/Nuts



RAIL BOLTS



STANDARD RAIL



CONNECTOR TUBE



TOP MOUNT END CLAMP

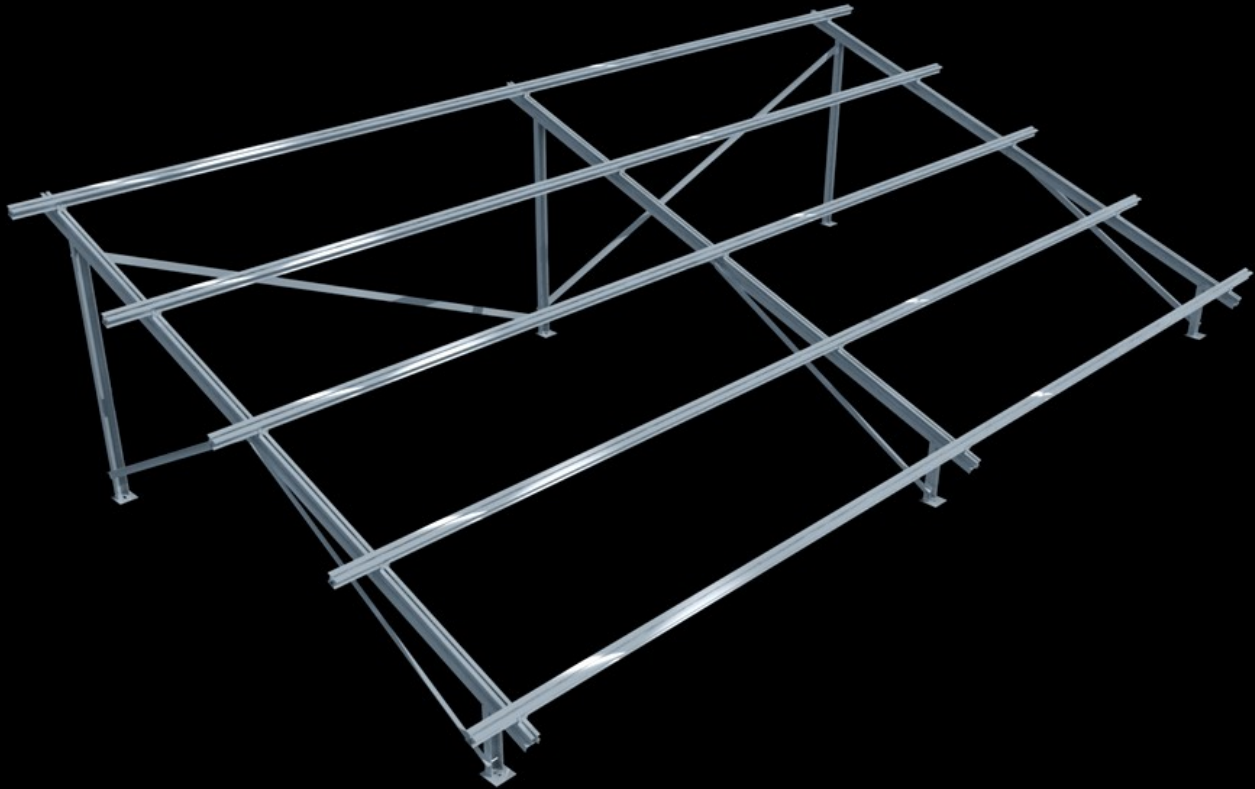


FACTORY PRODUCTION FACILITIES: Made in the USA & China

VISIT US ONLINE AT WWW.TOUGHTRAC.COM

©COPYRIGHT 2009 TOUGH TRAC™. TRADEMARK BELONGS TO THEIR RESPECTIVE OWNERS. ALL RIGHTS RESERVED.





TOUGH TRAC

Component Specifications

Aluminum Rail & Parts: 6061 Aluminum China & 6005 Aluminum USA (Mill Finish)

Hardware Parts: 300 & 400 Series Stainless Steel

Vertical Support: One Piece with Welded Base Plate

Code Compliant

PE Certified
TUV Tested
ISO Certified

Warranty

20 Years Limited Warranty

Technical Support

Installation Manual & Videos
Layout Design & Bill of Materials Calculated

Key Benefits:

- Lowest Priced MSRP in the market.
- Simple Installation and Ordering.
- Each Vertical Support is welded to the Base Plate to reduce install time.
- Compatible with ground screws or concrete piers.
- No heavy machinery needed for installation.
- Exclusive 2 rail design mounts any size panel and provides ultimate flexibility.
- Best in class spans for Standard Rail.
- Standard rail spans 96" for 120mph wind zones
- Heavy duty Rail spans 144" for 120 mph wind zones.
- 100% all Aluminum Components and Stainless Steel Hardware.
- 20 Year Limited Warranty.



FACTORY PRODUCTION FACILITIES: Made in the USA & China

VISIT US ONLINE AT WWW.TOUGHTRAC.COM

©COPYRIGHT 2009 TOUGH TRAC™. TRADEMARK BELONGS TO THEIR RESPECTIVE OWNERS. ALL RIGHTS RESERVED.

