



TOUGH TRAC™

LOW ANGLE BALLAST LANDSCAPE SYSTEM 2012



The TOUGH TRAC solution for a low angle design for Flat Roof Mounting features a ballast design for a penetration free installation.

For applications requiring a flush look for flat roofs, the TOUGH TRAC Low Angle Ballast Landscape Set features a 10 degree tilt with a penetration free ballast system.

Available with the TOUGH TRAC Standard Rail, our stock Low Angle Ballast Landscape System can be designed to all types of configured layouts.

In addition, with rear Joining Braces to another row, all systems are interlocked together to create a uniform array which prevents any row from sliding on the roof during high winds. Each ballast tray is designed to hold 16 concrete blocks from 2-6 inches for the required weight needed.

Consult your installer, architect, or engineer to determine your roof structure max weight loads and adequate spacing for shadowing between rows.



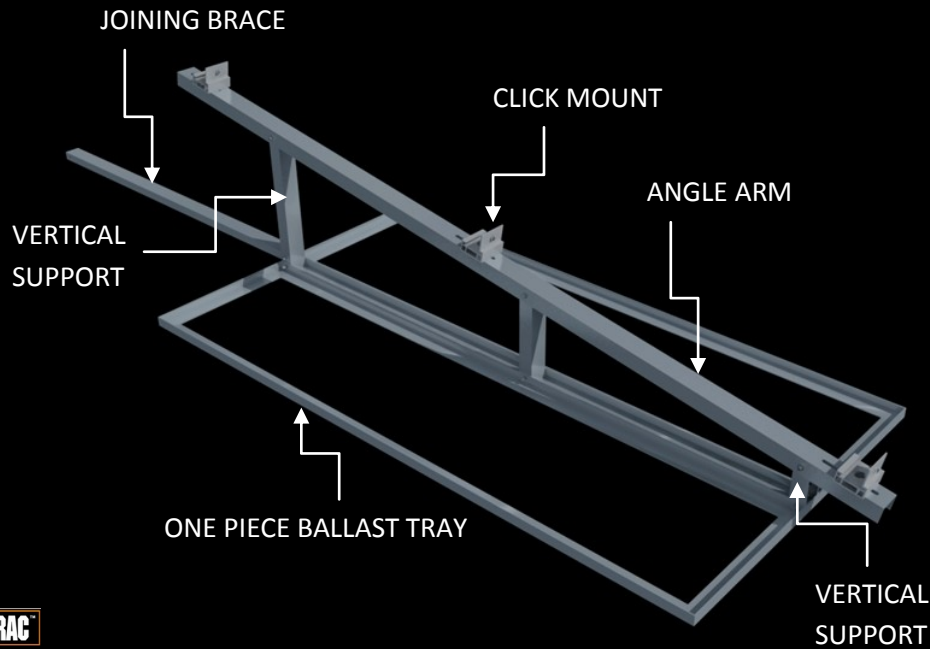
FACTORY PRODUCTION FACILITIES: Made in the USA & China

VISIT US ONLINE AT WWW.TOUGHTRAC.COM

©COPYRIGHT 2009 TOUGH TRAC™. TRADEMARK BELONGS TO THEIR RESPECTIVE OWNERS. ALL RIGHTS RESERVED.



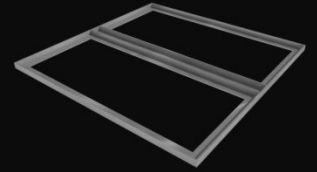
Low Angle Ballast Landscape Section



TOUGH TRAC™

TOUGH TRAC™

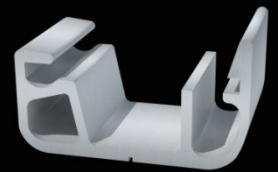
LABLS SET PARTS



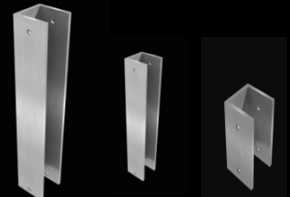
BALLAST TRAY



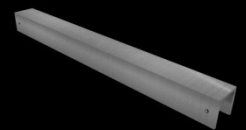
ANGLE ARM



CLICK MOUNT



VERTICAL SUPPORTS



JOINING BRACE

Low Angle Ballast Landscape System comprises the following parts:

- One Piece Ballast Trays
- C Rail Angle Arms
- Click Mounts
- Front , Mid, & Rear Vertical Supports
- Joining Braces
- Standard Rail
- Connector Tubes
- Top Mount End Clamps
- Top Mount Mid Clamps
- Large & Small Square Rail Stainless Steel Bolts/Washers/Nuts
- T Bolt Rail Stainless Steel Bolts/Washers/Nuts
- 1/4" x 3" Stainless Steel Bolts/Washers/Nuts
- 1/4" x 2" Stainless Steel Bolts/Washers/Nuts
- Set Screws #14 x 1" Stainless



RAIL BOLTS



STANDARD RAIL



CONNECTOR TUBE



TOP MID & END CLAMPS



FACTORY PRODUCTION FACILITIES: Made in the USA & China

VISIT US ONLINE AT WWW.TOUGHTRAC.COM

©COPYRIGHT 2009 TOUGH TRAC™. TRADEMARK BELONGS TO THEIR RESPECTIVE OWNERS. ALL RIGHTS RESERVED.





TOUGH TRAC Low Angle Ballast Landscape System

Component Specifications

Aluminum Rail & Parts: 6061 Aluminum China & 6005 Aluminum USA (Mill Finish)

Hardware Parts: 300 & 400 Series Stainless Steel

Ballast Tray: One Piece Welded

Code Compliant

PE Certified
TUV Tested
ISO Certified

Warranty

20 Years Limited Warranty

Technical Support

Installation Manual & Videos
Layout Design & Bill of Materials Calculated

Key Benefits:

- Lowest Priced MSRP in the market.
- Simple Installation and Ordering.
- Designed with One Piece Ballast Tray for easy install & can hold up to 16 blocks.
- Designed with 8" clearance in front end to avoid snow.
- Designed to accommodate all types of layout configurations.
- Best in class spans for Standard Rail.
- Standard rail spans 96" for 120mph wind zones
- 100% all Aluminum Components and Stainless Steel Hardware.
- 20 Year Limited Warranty.
- Standard Set weighs 0.94 psf.
- 5.5 psf ballast weight needed for 90 mph wind zones.



FACTORY PRODUCTION FACILITIES: Made in the USA & China

VISIT US ONLINE AT WWW.TOUGHTRAC.COM

©COPYRIGHT 2009 TOUGH TRAC™. TRADEMARK BELONGS TO THEIR RESPECTIVE OWNERS. ALL RIGHTS RESERVED.

